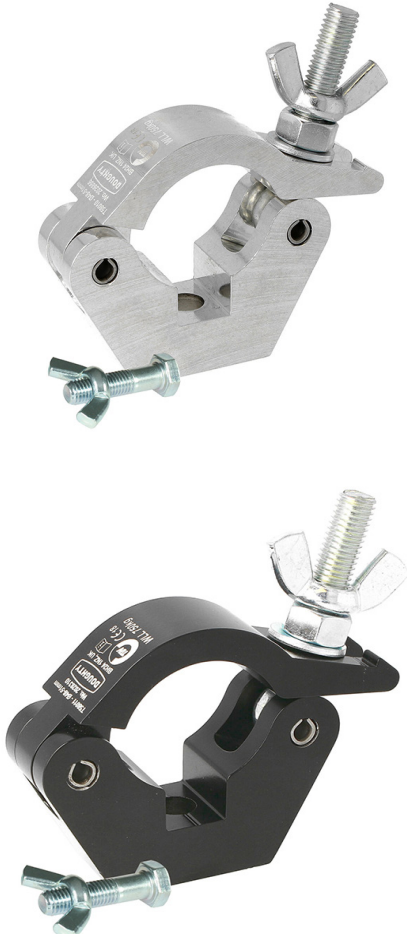




Product Data Sheet

Slimline Hook Clamp Coupler



A slimline half coupler supplied with fixing kit. Slotted to hold captive an M12 Nut or Bolt	
Part Nos	T58010 - Polished T58011 - Powder Painted Satin Black
Tube Diameter	Ø48 - 51mm (1.89" - 2.01")
Materials	Main Body - AW6082 T6 Aluminium Roll Pins - Stainless Steel Eyebolt Assy - Grade 8.8
Max Tightening Torque	30Nm
Fixings	Supplied with M12x50 Bolt / Wing Nut
WLL	750Kg
Weight	0.50Kg (1.10 lbs)
Factor of Safety	5:1
Approval	TÜV Approved

Dimensions in mm

