

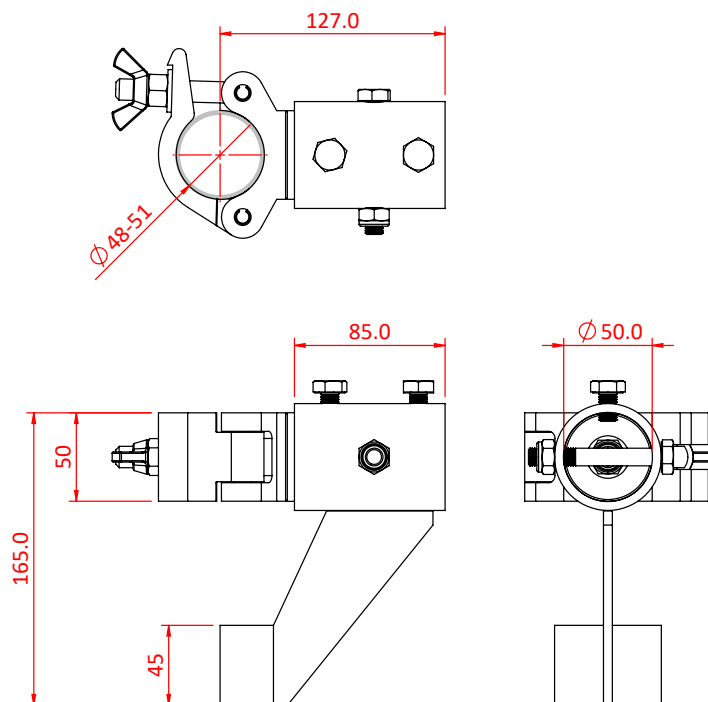


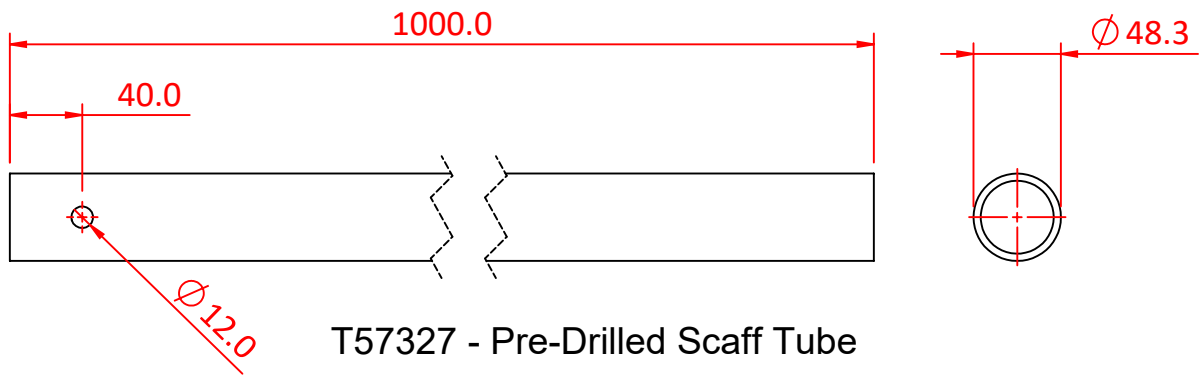
Scaff Boom Arms

Product Data Sheet



A Scaff Boom Arm	
Part Nos	T57326 T57327 - Pre-Drilled Scaff Tube
Tube Diameter	Ø48 - 51mm
Materials	Main Body - AW6082 T6 Aluminium Roll Pins - Stainless Steel Eyebolt Assy - Grade 8.8
Max Tightening Torque	30Nm
WLL	See page 3
Safety Factor	5:1





T57327 - Pre-Drilled Scaff Tube



T57326 - Scaff Boom Arm Load Table

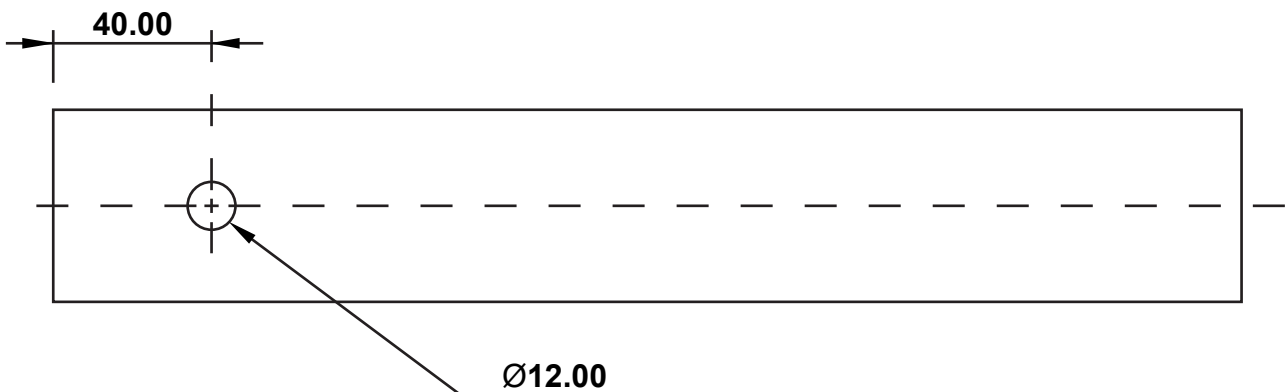
Ø48.3mm (1 29/32") x 7 SWG (6082 T6) Aluminium Barrel (EN AW-6082)			
Material	Length	WLL	Typical Deflection
Aluminium Barrel	250mm	200Kg	4.0mm
Aluminium Barrel	500mm	100Kg	8.0mm
Aluminium Barrel	750mm	75Kg	14.0mm
Aluminium Barrel	1000mm	50Kg	21.0mm

Ø48.3mm x 3.2mm Galvanised Steel Tube (EN39 European Standard)			
Material	Length	WLL	Typical Deflection
Galvanised Steel Tube	250mm	200Kg	3.0mm
Galvanised Steel Tube	500mm	100Kg	6.0mm
Galvanised Steel Tube	750mm	75Kg	8.0mm
Galvanised Steel Tube	1000mm	50Kg	11.0mm

Working Load Limits only apply to these sizes and grades of material.

If the material grade is unknown DO NOT USE.

Doughty Engineering Ltd stock both barrels/tubes.



Doughty Engineering Ltd can supply cut and drilled barrel/tube on request. Contact: sales@doughty-engineering.co.uk